

Checkmate, Stalemate, or Make a Move!

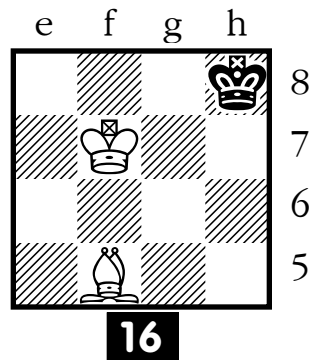
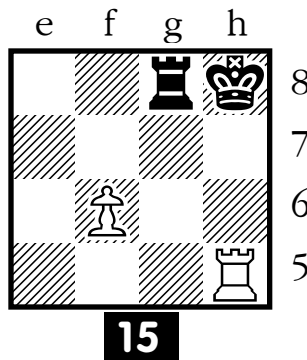
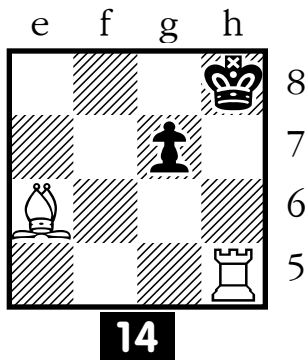
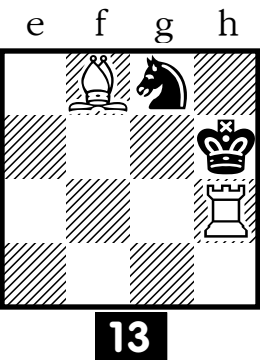
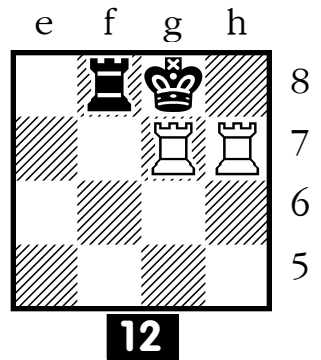
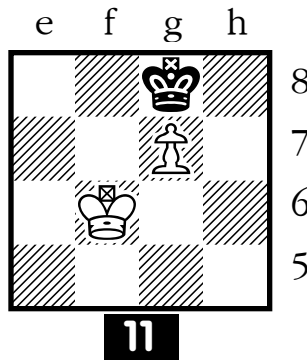
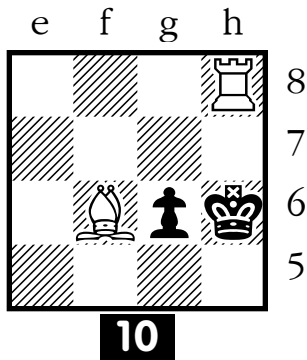
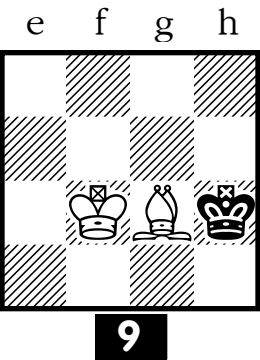
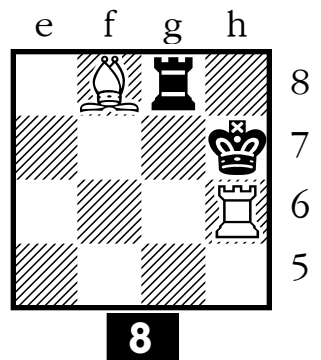
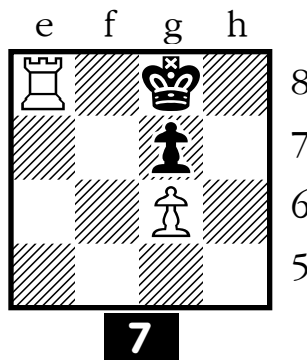
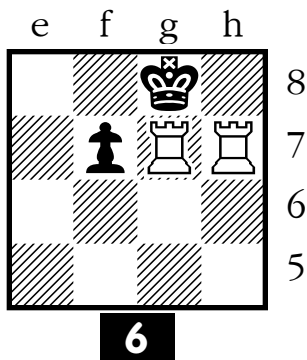
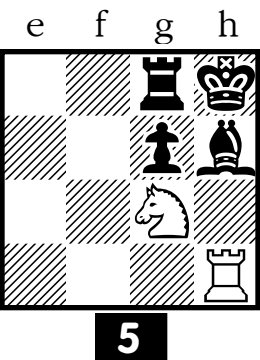
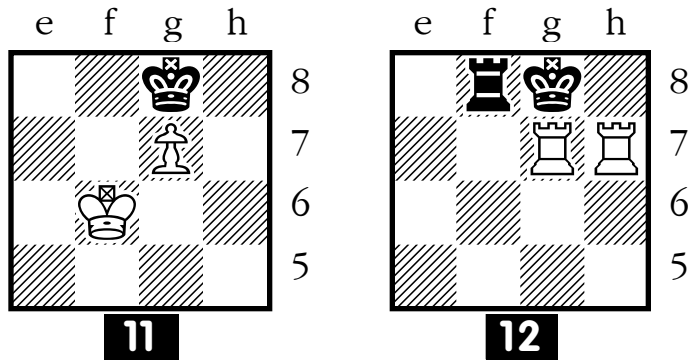
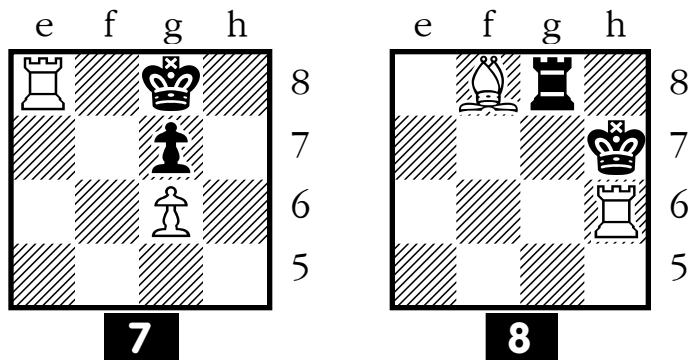
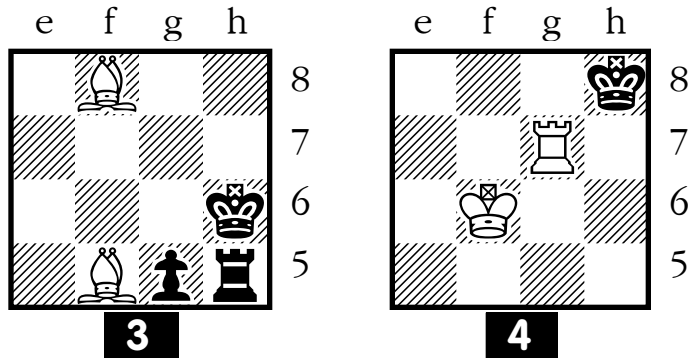
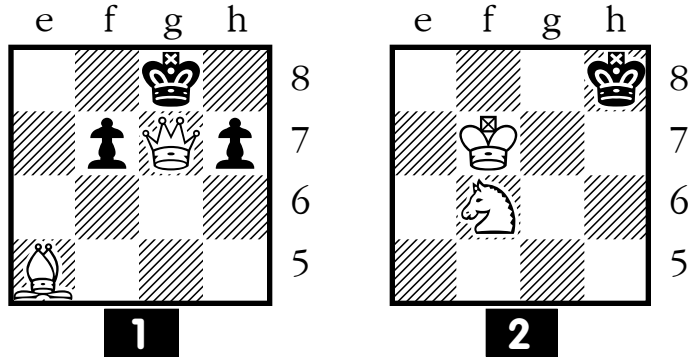
INSTRUCTIONS:

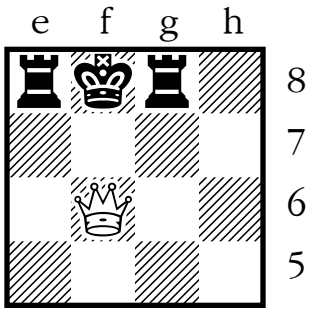
- For each of the 64 mini-diagrams, decide whether Black is in checkmate, in stalemate, or neither. It's always Black's move.
- Make your decisions based only on the part of the chessboard that's visible for each problem.
- Solutions are provided after the problems. (The answers have been scrambled using a knight's tour, so you won't accidentally see answers for nearby problems!)

Copyright © 2002 Prof. Chester Nuhmentz, Jr.

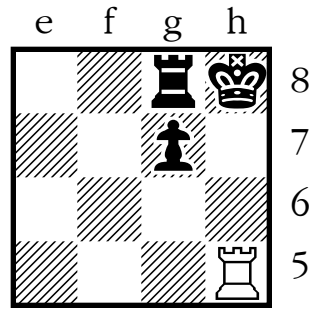
This exercise set may be photocopied for instructional use.

www.professorchess.com

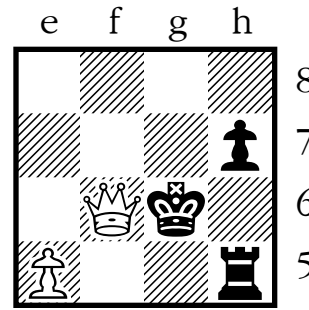




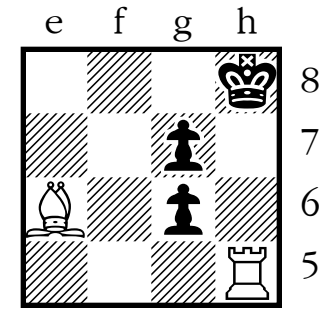
17



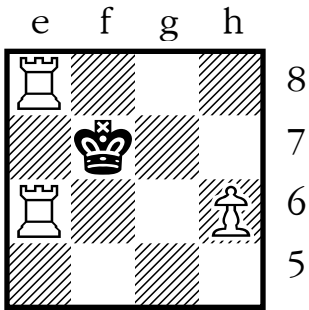
18



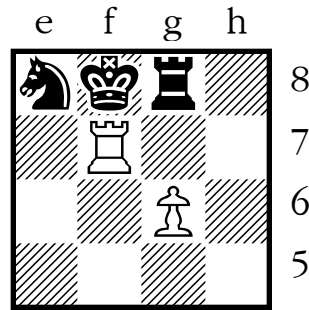
19



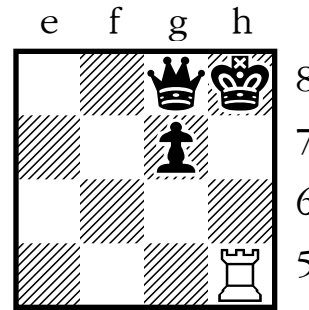
20



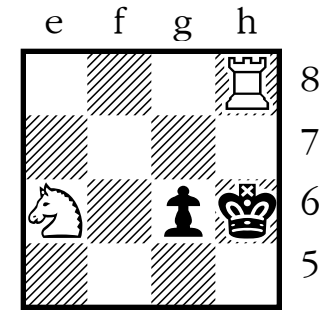
21



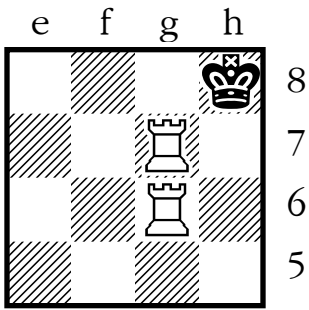
22



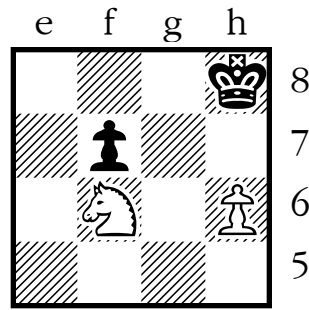
23



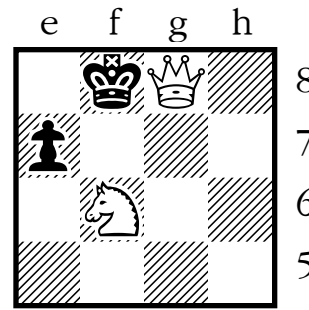
24



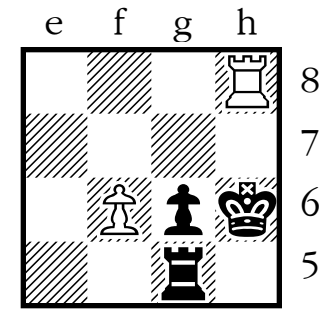
25



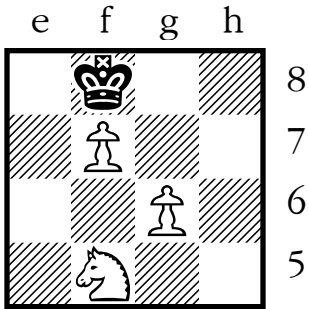
26



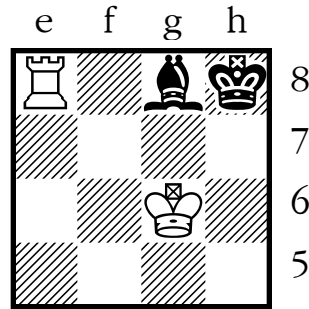
27



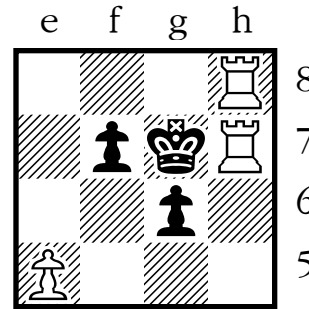
28



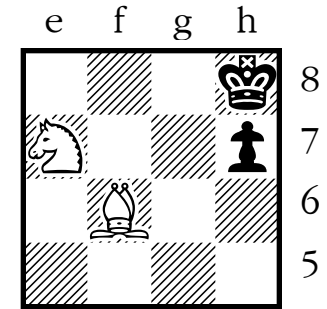
29



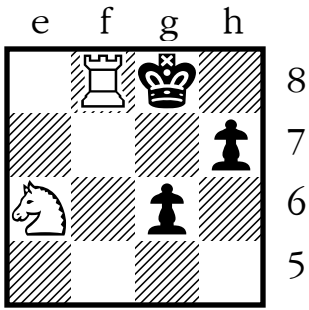
30



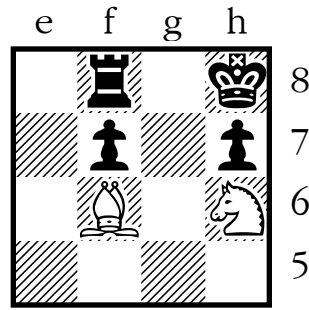
31



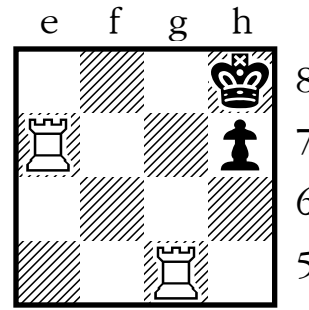
32



33

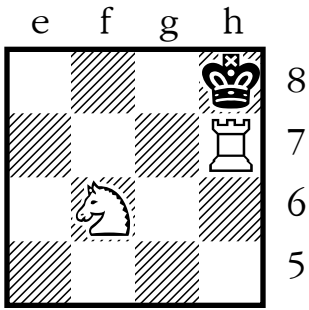


34

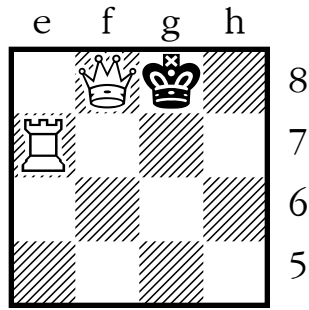


35

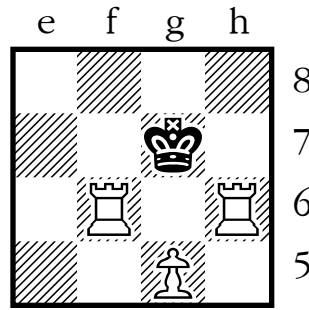




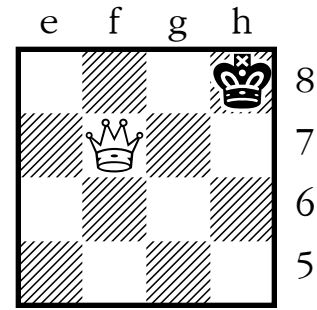
36



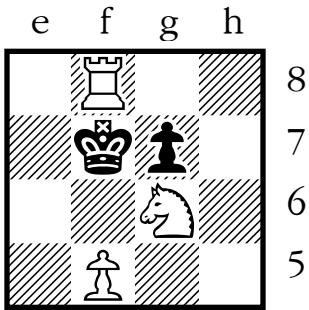
37



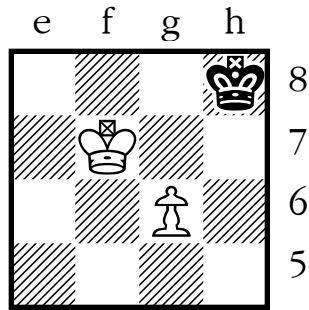
38



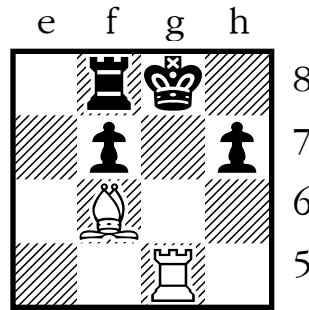
39



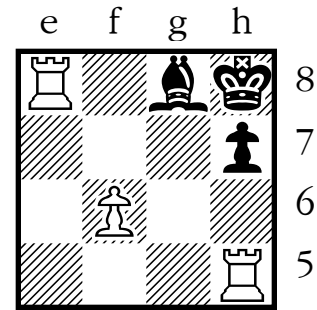
40



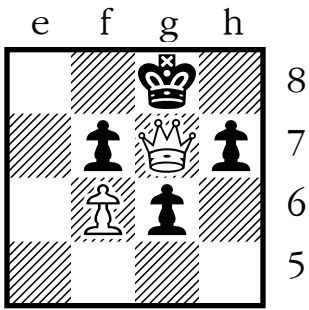
41



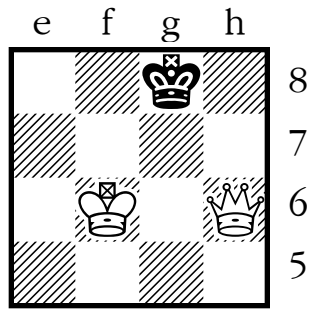
42



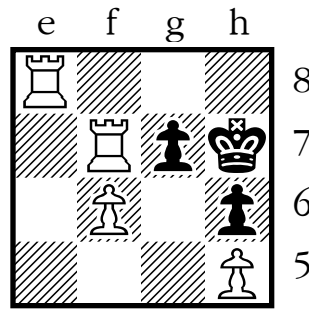
43



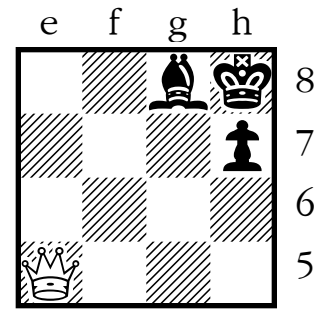
44



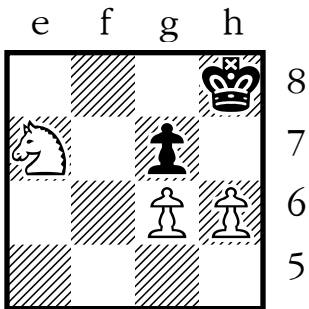
45



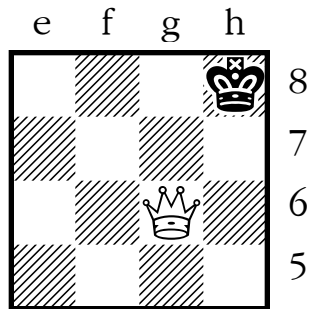
46



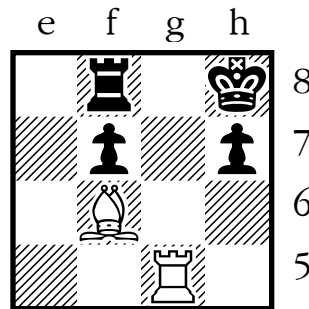
47



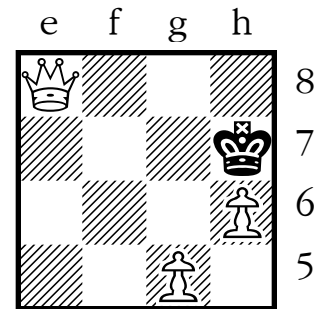
48



49



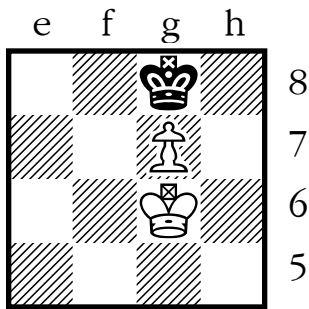
50



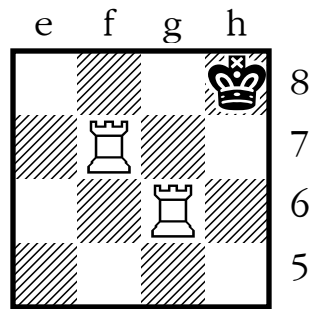
51



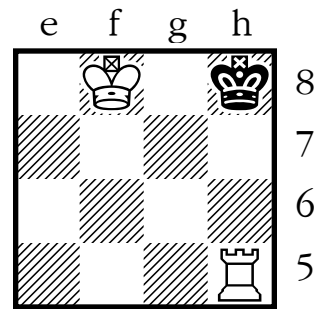
www.professorchess.com



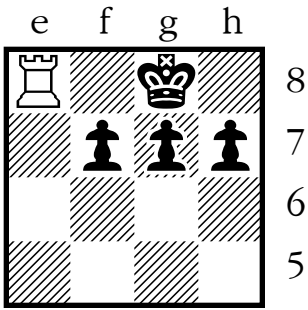
52



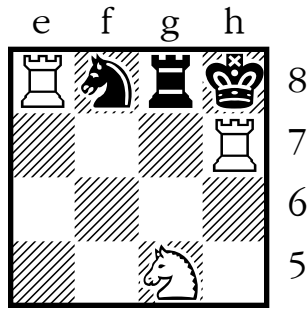
53



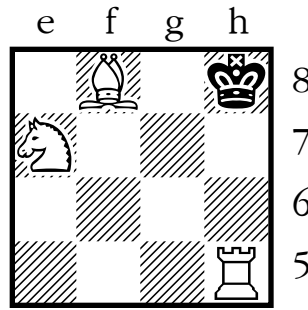
54



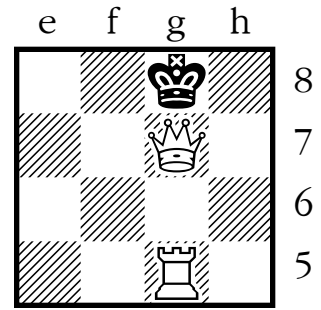
55



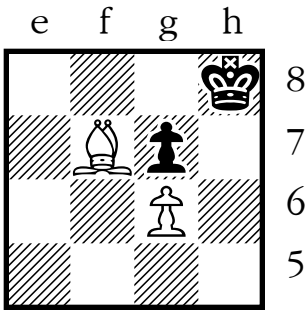
56



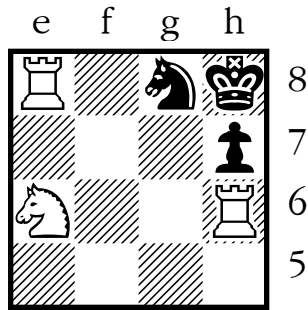
57



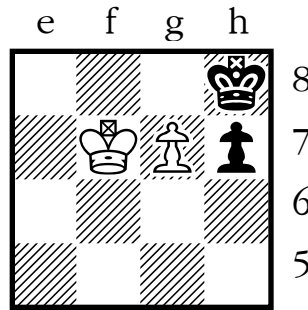
58



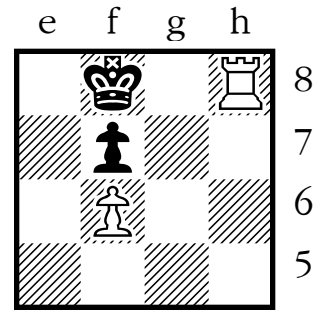
59



60



61



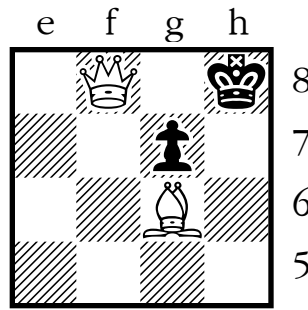
62

Solutions!

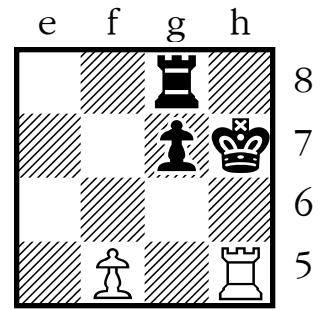
Use the table and diagram below if you'd like to check your answers.

- Locate the number for the problem you're checking.
- Beside the number, you'll see the name of a chess square.
- Look at that square on the diagram to see the coded answer.

- means **checkmate**
 = - means **stalemate**
 MV - means Black has a **possible move**

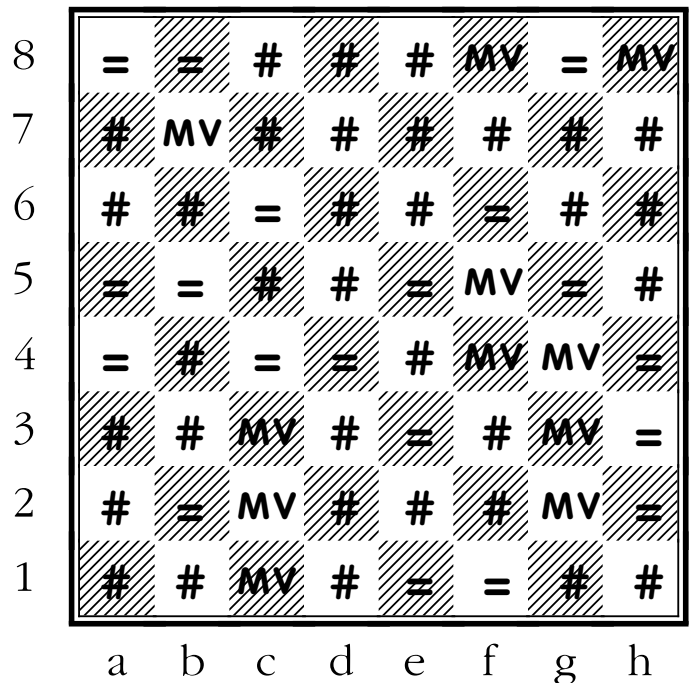


63



64

- | | | | |
|--------|--------|--------|--------|
| 1. c7 | 17. d6 | 33. f2 | 49. e3 |
| 2. a8 | 18. e8 | 34. h1 | 50. d1 |
| 3. b6 | 19. g7 | 35. g3 | 51. b2 |
| 4. a4 | 20. f5 | 36. h5 | 52. c4 |
| 5. c5 | 21. h4 | 37. f4 | 53. a5 |
| 6. b7 | 22. g6 | 38. g2 | 54. b3 |
| 7. d8 | 23. h8 | 39. e1 | 55. a1 |
| 8. e6 | 24. f7 | 40. d3 | 56. c2 |
| 9. d4 | 25. g5 | 41. e5 | 57. b4 |
| 10. e2 | 26. h3 | 42. d7 | 58. a6 |
| 11. c1 | 27. g1 | 43. f8 | 59. b8 |
| 12. a2 | 28. f3 | 44. h7 | 60. c6 |
| 13. c3 | 29. h2 | 45. f6 | 61. a7 |
| 14. b1 | 30. f1 | 46. g8 | 62. c8 |
| 15. a3 | 31. d2 | 47. h6 | 63. e7 |
| 16. b5 | 32. e4 | 48. g4 | 64. d5 |



Answer Form for *Checkmate, Stalemate, or Make a Move!*



www.professorchess.com

Name: _____

Date: _____

1. Checkmate Stalemate Black may move: _____
2. Checkmate Stalemate Black may move: _____
3. Checkmate Stalemate Black may move: _____
4. Checkmate Stalemate Black may move: _____
5. Checkmate Stalemate Black may move: _____
6. Checkmate Stalemate Black may move: _____
7. Checkmate Stalemate Black may move: _____
8. Checkmate Stalemate Black may move: _____
9. Checkmate Stalemate Black may move: _____
10. Checkmate Stalemate Black may move: _____
11. Checkmate Stalemate Black may move: _____
12. Checkmate Stalemate Black may move: _____
13. Checkmate Stalemate Black may move: _____
14. Checkmate Stalemate Black may move: _____
15. Checkmate Stalemate Black may move: _____
16. Checkmate Stalemate Black may move: _____
17. Checkmate Stalemate Black may move: _____
18. Checkmate Stalemate Black may move: _____
19. Checkmate Stalemate Black may move: _____
20. Checkmate Stalemate Black may move: _____
21. Checkmate Stalemate Black may move: _____
22. Checkmate Stalemate Black may move: _____
23. Checkmate Stalemate Black may move: _____
24. Checkmate Stalemate Black may move: _____
25. Checkmate Stalemate Black may move: _____
26. Checkmate Stalemate Black may move: _____
27. Checkmate Stalemate Black may move: _____
28. Checkmate Stalemate Black may move: _____
29. Checkmate Stalemate Black may move: _____
30. Checkmate Stalemate Black may move: _____
31. Checkmate Stalemate Black may move: _____
32. Checkmate Stalemate Black may move: _____
33. Checkmate Stalemate Black may move: _____
34. Checkmate Stalemate Black may move: _____
35. Checkmate Stalemate Black may move: _____
36. Checkmate Stalemate Black may move: _____
37. Checkmate Stalemate Black may move: _____
38. Checkmate Stalemate Black may move: _____
39. Checkmate Stalemate Black may move: _____
40. Checkmate Stalemate Black may move: _____
41. Checkmate Stalemate Black may move: _____
42. Checkmate Stalemate Black may move: _____
43. Checkmate Stalemate Black may move: _____
44. Checkmate Stalemate Black may move: _____
45. Checkmate Stalemate Black may move: _____
46. Checkmate Stalemate Black may move: _____
47. Checkmate Stalemate Black may move: _____
48. Checkmate Stalemate Black may move: _____
49. Checkmate Stalemate Black may move: _____
50. Checkmate Stalemate Black may move: _____
51. Checkmate Stalemate Black may move: _____
52. Checkmate Stalemate Black may move: _____
53. Checkmate Stalemate Black may move: _____
54. Checkmate Stalemate Black may move: _____
55. Checkmate Stalemate Black may move: _____
56. Checkmate Stalemate Black may move: _____
57. Checkmate Stalemate Black may move: _____
58. Checkmate Stalemate Black may move: _____
59. Checkmate Stalemate Black may move: _____
60. Checkmate Stalemate Black may move: _____
61. Checkmate Stalemate Black may move: _____
62. Checkmate Stalemate Black may move: _____
63. Checkmate Stalemate Black may move: _____
64. Checkmate Stalemate Black may move: _____

For similar exercises using full-board diagrams, please see *Is There Any Escape?*