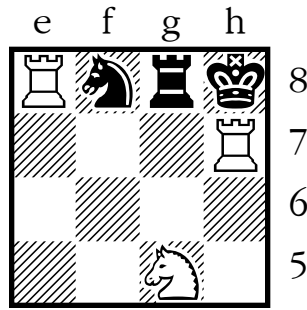
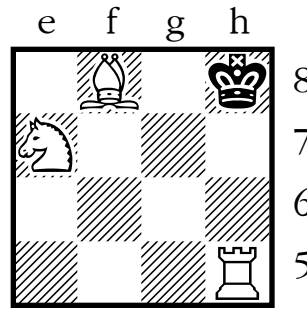


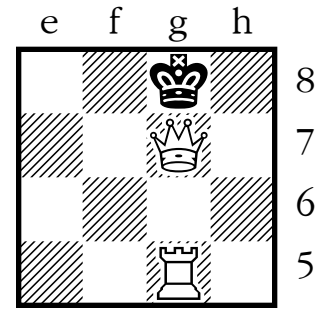
**55**



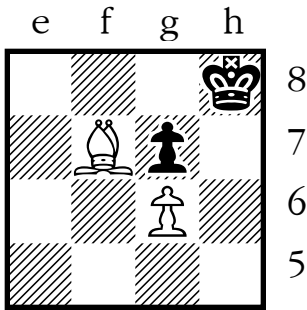
**56**



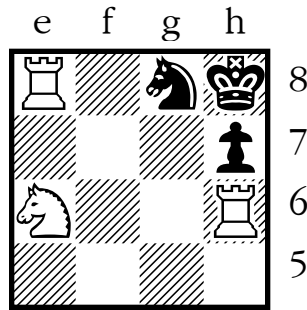
**57**



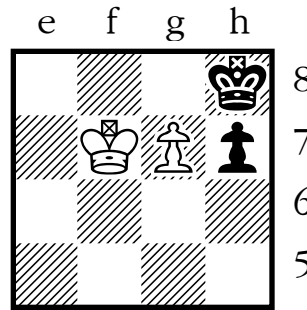
**58**



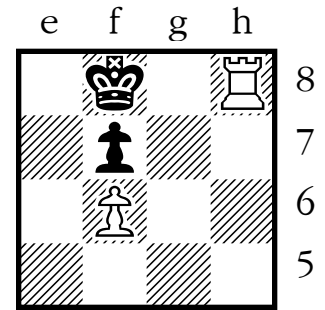
**59**



**60**



**61**



**62**

## Solutions!

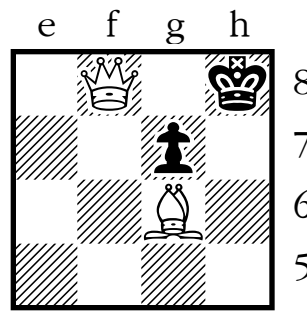
Use the table and diagram below if you'd like to check your answers.

- Locate the number for the problem you're checking.
- Beside the number, you'll see the name of a chess square.
- Look at that square on the diagram to see the coded answer.

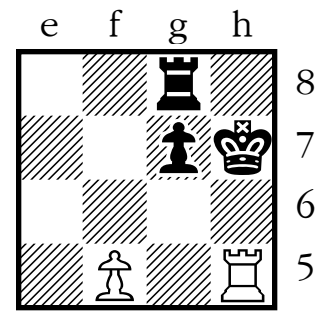
# - means **checkmate**

= - means **stalemate**

MV - means Black has a **possible move**



**63**



**64**

- |        |        |        |        |
|--------|--------|--------|--------|
| 1. c7  | 17. d6 | 33. f2 | 49. e3 |
| 2. a8  | 18. e8 | 34. h1 | 50. d1 |
| 3. b6  | 19. g7 | 35. g3 | 51. b2 |
| 4. a4  | 20. f5 | 36. h5 | 52. c4 |
| 5. c5  | 21. h4 | 37. f4 | 53. a5 |
| 6. b7  | 22. g6 | 38. g2 | 54. b3 |
| 7. d8  | 23. h8 | 39. e1 | 55. a1 |
| 8. e6  | 24. f7 | 40. d3 | 56. c2 |
| 9. d4  | 25. g5 | 41. e5 | 57. b4 |
| 10. e2 | 26. h3 | 42. d7 | 58. a6 |
| 11. c1 | 27. g1 | 43. f8 | 59. b8 |
| 12. a2 | 28. f3 | 44. h7 | 60. c6 |
| 13. c3 | 29. h2 | 45. f6 | 61. a7 |
| 14. b1 | 30. f1 | 46. g8 | 62. c8 |
| 15. a3 | 31. d2 | 47. h6 | 63. e7 |
| 16. b5 | 32. e4 | 48. g4 | 64. d5 |

